



Medical Electives in Kenya & Tanzania

Redifining Educational Travel



Table of Contents

Introduction

Program Objectives	5
Targeted Participants	5

Why Choose Elective Africa's Program

Program Competencies Framework	7
Program Specialties	9
Program Evaluation for Students	10
Summary of the Program Schedule	11

Program Aspects & Requirements

Basic Placement Requirements	12
Summary of 24Hours with Elective Africa	13
Aspects of the Program	15

Our Destinations

Destinations	20
Our Program Package	22
Planning Your Program	23

Prices

Program Prices	24
Pictorial	25
Featured Testimonials	26
Contact Us	27



Our Mission

To be the best travel abroad
placement provider in Africa;
Redefining EducationTravel



Introduction

Elective Africa is a leading organizer of medical elective placements in Africa. We have been working for over 18 years with teaching hospitals, rural hospitals and community health centers in Africa to provide current and aspiring medical and healthcare students a rare opportunity for a hands-on learning experience, cultural exchange, and medical volunteering in Africa.

The Medical Program is specifically tailored for both senior and junior medical students based on the specialty they decide to rotate through.

Program Objectives

1. Provide extensive hands on learning experience – our participants leave our programs having enhanced their experience levels with various skills.
2. Provide an opportunity to enhance essential clinical skills such as history taking, interviewing, physical examinations, ordering and interpreting lab tests, diagnosis, treatment planning, prescriptions, and assisting with surgeries.
3. Compare and analyze healthcare access and delivery in a different setting.
4. Opportunity to experience tropical medicine and unusual diseases.
5. Opportunity to see diseases at advanced clinical stages.
6. Meet elective and clinical rotation requirements under practitioner supervision with evaluation during and after the program.
7. Satisfy independent study or internship abroad for credit.
8. Demonstrate and satisfy global intellectual curiosity.
9. Safe and secure program experience while abroad.
10. Cultural exchange and exposure, particularly from peer students in host country and community.

11. Travel



Enrich your Medical Career with Elective Africa



Have a passion
for Medicine?



Looking for Hands-on
Experience?



Want to do a
medical elective &
volunteer abroad



LOOK NO FURTHER:
Facilities Clinical electives
placement

Elective Africa's medical students' program objectives are designed to provide participants with opportunities to enhance the various components of their medical education in a clinical setting and with extensive hands-on experience that they would not get in their own countries. Our program objectives adopts the **Accredited Council for Graduate Medical Education (ACGME)** competencies framework, which includes:

1. Patient Care
2. Medical Knowledge
3. Interpersonal & Communication Skills
4. Practice based learning
5. Professionalism and System based practice

Why Choose Our Program

- 1.** A supervised, structured and safe elective program abroad
- 2.** Program is designed in an established network of teaching hospitals and monitored by consultant doctors and registered nurses. We encourage clinical directors and student co-coordinators to work with us to customize an elective experience that meets unique institutional requirements.
- 3.** We evaluate our participants during and at the end of the program (please see our information booklet for our evaluation form) to ensure that program objectives are met.
- 4.** Opportunity for hands-on experience is unmatched; depending on level of study and clinical exposure, our participants get extensive hands-on experience in a supervised setting
- 5.** We have strong relationships with hospitals in which we place our students and the doctors that they work with, ensuring a very productive experience. The students acquire an invaluable opportunity to work in a low resource setting which supports character development and benefits the local community.



Program Competencies Framework

Domain	General Program Objective
Patient Care	<p>Program participants will enhance and practice skills such as:</p> <ul style="list-style-type: none"> • History taking. • General and physical examination. • Developing differentials. • Comprehensive assessment of conditions and recommendations for care. • Patient management Observe and assist in medical procedures. • Proper disposition and follow up.
Medical Knowledge	<p>Participants will get opportunity to:</p> <ul style="list-style-type: none"> • Demonstrate knowledge about established and Knowledge evolving medical sciences and application to patient care. • Participate in investigating and analyzing clinical problems. • Participate in case presentations, lectures, and conferences. • Feedback and direction from mentoring physicians.
Practice Based Learning	<p>Participants will get a chance to:</p> <ul style="list-style-type: none"> • Investigate and evaluate their patient care practices, appraise and assimilate scientific evidence, and improve their practices. • Self directed learning during the elective program. • Locate & assimilate studies related to patient health problems • Evaluation of literature.
Interpersonal Communication & Skills	<p>Participants will get opportunity to:</p> <ul style="list-style-type: none"> • Demonstrate and enhance interpersonal and communication skills necessary for patient care. • Communicate effectively to create a therapeutic relationship with patient. • Work effectively with other medical professionals.
Professionalism	<p>Participants will get an opportunity to demonstrate commitment to professional responsibilities, ethical behavior, and sensitivity to patient.</p>
System Based Practice	<p>Participants get an opportunity to experience healthcare in a different settings, and to compare and contrast healthcare in their home county to healthcare delivery and access in elective countries such as Kenya.</p>

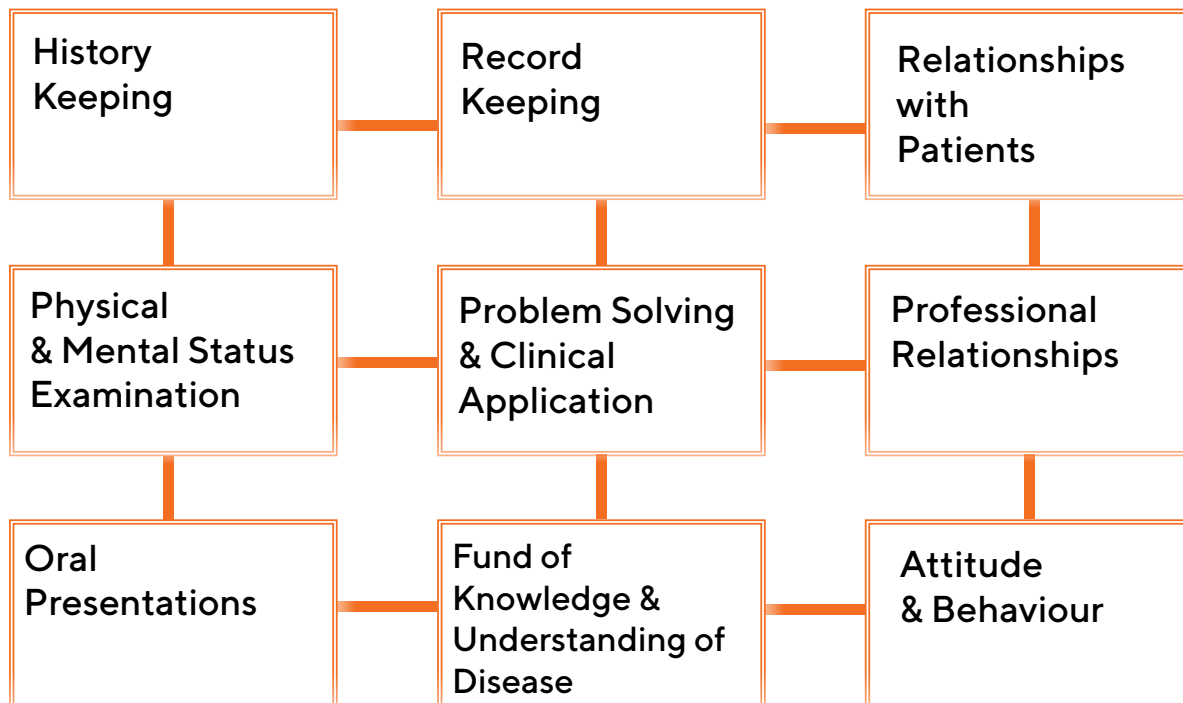
Program Specialties Include

- | | | |
|----------------------------------|---------------------------------------|---|
| 1. Medicine | 7. ENT | 13. Hematology |
| 2. General Surgery | 8. Ophthalmology | 14. Tropical Medicine & Infectious Diseases |
| 3. Obstetrics & Gynecology | 9. Gender Violence & Recovery Centers | 15. Immunology |
| 4. Pediatrics | 10. Orthopedics / Osteopathy | 16. Gross Pathology |
| 5. Accidents, Emergency & Trauma | 11. Physiotherapy | 17. HIV Medicine |
| 6. Psychiatry | 12. Radiology | |

Specialty	Sample Procedures or sessions to observe and/or assist in as appropriate
Obstetrics & Gynecology	Obstetric history taking, ward rounds, partography, leopolds maneuver, normal delivery, observe, caesarian section , tubal ligations, antenatal care clinic consultation, high risk antenatal care clinic consultation, labor induction methods, post-op care, gynecological history taking, speculum exam, pap smear, high vaginal swab , trace pap smear sample route from patient through lab and pathology, hsb, salpingectomy, mva, D&C, GOPC consult, FP consult, Management of labor and interventions, Assisted delivery- forceps, Vacuum, Episiotomy, endometrial biopsy, myomectomy, ectopic pregnancies, hysterectomies- total and subtotal.
Medicine	History taking and physical examination, logical and evidence based diagnosing and management, literature review, ward rounds, radiographic interpretations, IV cannulation, nasogastric tube insertion, phlebotomy, stomach irrigation and enemas, lumbar puncture, urethral catheterization, pleural tap, ascitic tap, prepare and view MPS,CCC consult.
Accidents, Emergency & Trauma	History and physical examination, acute and critical care management, ACLS, primary and secondary trauma assessments, radiographic interpretation, suturing, minor surgery, catheterization, IV placements, chest tubes, incision and drainage, nasogastric tube insertion, lumbar puncture, orthopedic reductions, dressing, casting, admissions and dispositions.
Psychiatry	Psychiatric history taking, general and systemic examination, ward rounds, IV cannulation, sedation, restraint, electroconvulsive therapy, group therapy, psychotherapy, family therapy, psychiatric emergencies,acute psychosis
ENT	Intubation, tonsillectomies, adenoidectomy, tracheostom.
Pediatrics	Pediatric and neonatal history and physical examinations, literature review, ward rounds, radiographic interpretations, calculation of fluidsfor a dehydrated child, calculation of feeds for a malnourished child, neonatal care, pediatric outpatient consult, expanded immunization programs, nasogastric tube insertion, phlebotomy, lumbar puncture
Surgery	History taking and physical examination, radiographic interpretation, ward rounds, suprapubic catheterization, chest tube insertion, excision/incision biopsies, fluid calculation for burns patients, suturing, incision & drainage, POP application, laparotomies, open fracture and dislocation reduction, surgical toilets, urethral catheterization

Program Evaluation for Students

Students are evaluated on the following criteria by mentoring faculty:



Timing	Activities
Day 1 & 2	<ul style="list-style-type: none"> • Arrival: Picked up from the airport by our representative and taken to student residence – comfortable shared basic accommodation. • Residence orientation, including introduction to staff that will be taking care of you during your stay • Local orientation on surroundings – where to shop, groceries, access internet, transportation, communication, etc. • Overview of program rules and regulations.
Day 3	<p>Program content introduction</p> <ul style="list-style-type: none"> • Overview and discussion of healthcare system in host country. • Introduction to program professional mentors. • Introductions to basics such as using stethoscope for those needing introduction. • Introduction visit to the hospital and meeting staff you will be working with.
Day 4 through 29	<ul style="list-style-type: none"> • Clinical setting experience & Specialty rotations. • Shadowing doctors and nurses. • Participating in ward rounds. • Observing and assist in a range of bedside procedures such as phlebotomy, insertion of intravenous cannulae, dressing and stitching of laceration, clerkship at casualty, etc. • Observing and assist in surgical procedures such as abscess drainage, cesarean section, appendectomy, ganglion excision, amputations, laparotomies, palmer abscess drainage, manual vacuum aspirations, bilateral tubal ligations, etc. • Rotations in other specialties as may be of interest, such as OBGYN, medicine, psychiatry, pediatrics, surgery etc.
One weekend	<ul style="list-style-type: none"> • Participate in select community service projects; projects are always ongoing and participants can participate during their free time.
Extended weekend	<ul style="list-style-type: none"> • A free day for optional activities or excursions i.e. optional trip to the Masai Mara, including a stop to a Masai Village.
Day 29	<ul style="list-style-type: none"> • Debrief sessions, evaluation, and review. • Departure BBQ.
Day 30	<ul style="list-style-type: none"> • Departure & Pick up at the student resident by one of our representatives and taken to departure point.

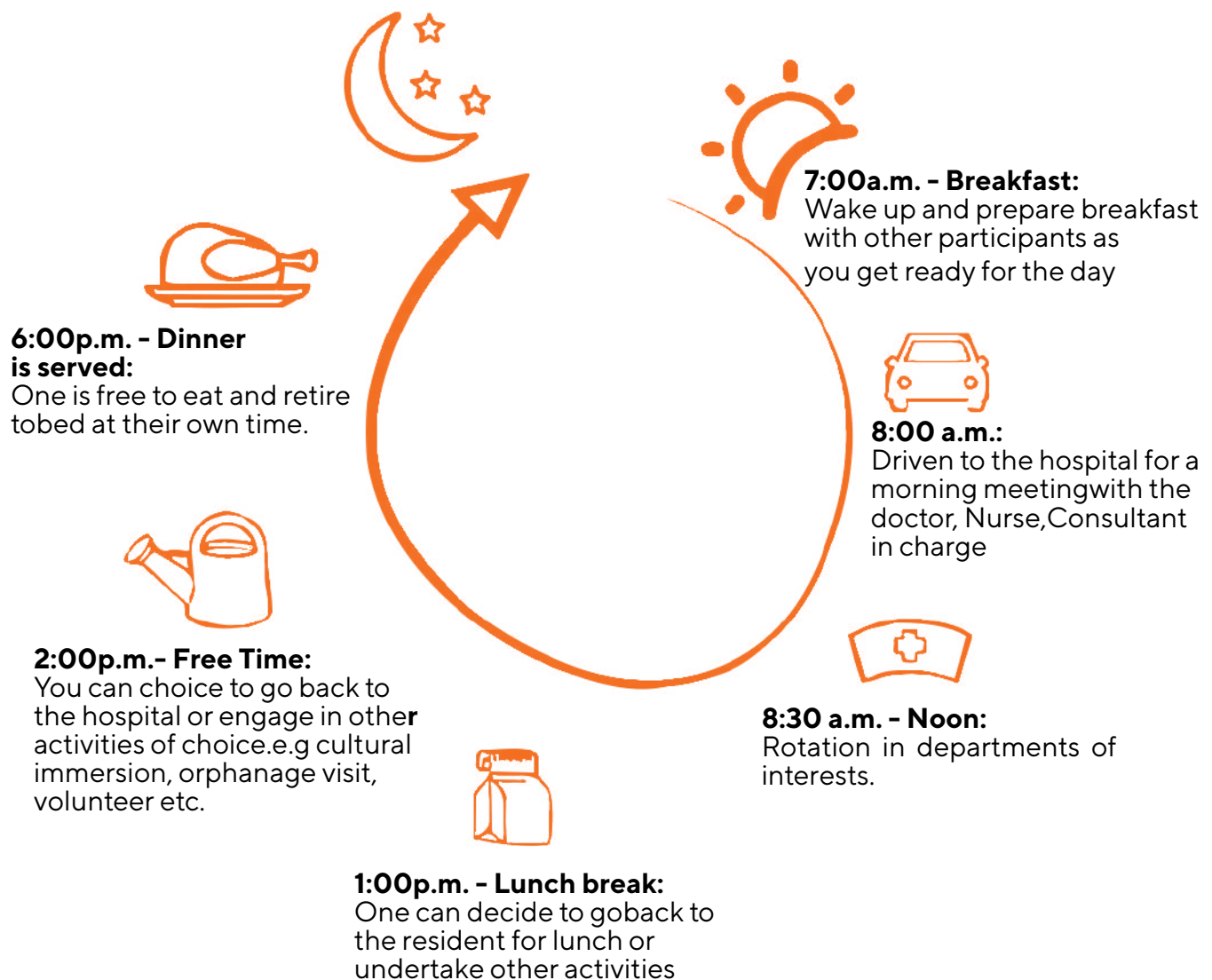
Basic Placement Requirements

1. Must be at least 18 years of age.
2. Full payment of program fee 3 (three) months prior to starting the program.
3. A non-refundable deposit of \$350 that is deductible from the total program fee.
4. Duly completed online application form.
5. A signed letter on a letter head from the school/institution showing they are bona fide students at that institution.
6. For medical camps Doctors must show proof of medical qualification e.g. certificates of qualification or copies of practitioners' license.
7. Students must show evidence of enrollment in a medical school.





24 Hours with Elective Africa



Planning an individualized & structured healthcare elective requires a significant level of preparation. The non-refundable reservation deposit allows us to process your paperwork, plan for your mentorship, book your accommodation and to create your "MyElective" account. The fee also guarantees a spot for you in the program. Prices below are in addition to the reservation deposit.

How To Apply

To apply you must;

- Be at least 18 years old
- Complete an application at <http://www.electiveafrica.com/apply>
- Provide evidence of enrollment in a university program usually a signed letter from your institution showing that you are a bona fide student in good standing.
- Pay the reservation deposit.

#ElectiveAfrica

Follow Us for favourite stories from Abroad

✉ info@electiveafrica.com

☎ +1 609 375 8912

☎ +254 (731) 014 379

YouTube Elective Africa



Elective Africa



@ElectiveAfrica



@Elective_Africa

LinkedIn

Elective Africa

Aspects of the Program

We have clearly laid our partnership with hospitals that ensure that besides having an opportunity have a mentor. You will observe various clinical activities and have questions to ask; the mentor's role is to explain these activities in a manner that you can understand.

The mentor also gives you the real picture of what is entailed in the delivery of care in your area of interest and this way you learn the best practice to succeeding in the profession. With the hospital time you will also have the opportunity to participate in continuous medical education sessions, which may come in form of presentations by the personnel in the hospital.

This participation enables students to understand the basic tips on patient care; they also get to understand tips on researching on recent medical developments. The daily ward presentations and case analysis at the hospital setting are not only educational forums but a team working session which clearly teaches the students the need for team work in care delivery and interpersonal skills in healthcare delivery.

Quality Healthcare Internships

Elective Africa incorporates guidelines laid out by universities and schools to ensure that internship placements are structured according to a student's program objectives, level of clinical skills and the individual's specific interest.

Part of the university recommendations are that one is exposed to the health system and observe what the professional does on a day to day basis thus developing and determining whether that career is their best fit. We are keen to follow the guidelines on clinical training.

The students are not involved in any activity that requires prior technical know-how; Students are able to understand through the interaction with other healthcare personnel how care is delivered and in a team context and what the roles of some major players are. Given that head office teams are on ground, we are able to continuously evaluate & monitor the hospital placement structures to ensure that they have the capacity to offer quality learning opportunity for the students.



Unique Health System

Our destinations of placements have health systems that are characterized by, unique health conditions such as tropical diseases, shortage of specialized medical equipment and inadequate staff for the delivery of comprehensive care.

A mentorship experience in this system thus allows one to learn the strain associated with management of conditions that may not be present at their home countries. The shortage of staff and resources prompts the doctors to be innovative in order to deliver the much needed health services with the limit of resources, an internship with us is therefore a first real interaction between an aspiring healthcare professional and innovation to deliver care.

These partner hospitals are rewarded for their commitment to our programs; every student fee carries a hospital fee that is paid to the hospital of placement. In addition we reward the healthcare professionals with a mentorship fee too. We also conduct special CSR projects with hospitals as a way of givingback.

Our students have also found it very rewarding raising donations in support of the health system especially with the visible resource constrains.

Global Health Tutorials

Every week our participants come together at the residential house where they take part in global health tutorials coordinated by our local health experts. These sessions address various ethical issues and dilemmas facing professionals in the host country.

These sessions also present the students to raise questions on some of the observations they have made as well as the clear difference they have observed.

These sessions add up to the discussion among the students with similar interests and from different locations. Through these discussions the students are able to understand how culture influences delivery





Health & Safety

Our goal is to ensure each student is safe and secure in their placement abroad. Our placement destinations are well selected in zones where the locals are friendly to the foreigners and welcoming to all people. We keep abreast of all security developments and provide necessary information in a timely manner. From the moment you land, our staff will be on hand to provide on-program support. Whether at the hospital or out about town, we are just a call away. We are very keen to advise our students on the measures to take to ensure their safety and that of their belongings.

Daily Shadowing Journal

Our programs requires participants to keep a daily log of their hospital activities. Keeping a journal of your hospital experience will help you maximize on what you learnt by putting your thoughts to words and serve as a reference during your admissions process. This also helps the students document their daily experiences as well as the key skills learnt while on placement. The journal acts as a monitoring aid to the coordinators on the experiences of the students and assists to correct any deficiencies in the desired experiences.


At the end of the program we issue a review form to evaluate the student's activities and learning as a summation of the daily logs.



College Credit

We encourage our program participants to work with their college advisors and program sponsors to seek college credit for the program.

To receive a certificate of completion, participants complete at least 50-60 hours. Students who wish to seek the college credits are also encouraged to bring an evaluation form from their school which is filled by the doctors and mentors at the site of placement.

A photograph of a person with blonde hair, wearing a red and black plaid shuka (a traditional Maasai garment), standing in the center. They are looking down. To their left and right are three Maasai men, also wearing red shukas with different patterns (one with yellow circles, one with orange stripes, and one with a red and black plaid). They are standing in a rural, hilly landscape under a cloudy sky. The text "DESTINATIONS FOCUS" is overlaid in large white letters.

DESTINATIONS FOCUS

Discover how small a world you occupy, see the world with new lens.

Discover destinations. Discover people.

Rural Kenya Placements

This destination presents unique chances to experience the rural setting as one gets a rare chance to be mentored and supervised in **Migori County Referral Hospital**. In this hospital one has the chance to encounter the treatment of infectious diseases such as Malaria as well as be able to see the diagnosis, prognosis and treatment of advanced medical conditions.

Out of the hospital, the volunteer and impactful activities are in plenty ranging from visits to children's homes, community engagement for health promotions are among those rewarding activities which one can be involved in. With a slow pace life here unfolds and in silence your passion to health-care profession is rejuvenated and fueled.

Health practitioners in rural setting of Migori speak out to one voice, one calling that of passion. It is common to hear them tell the participants "In a cold world and an icy profession there's is love and compassion in caring

Urban Kenya Placements

Nairobi, Kenya is a highlight of an urban location of the developing world. This destination presents a unique opportunity for mentorship at **Mbagathi District Hospital**. The ready-made elective at this location allows one to be immersed into unique health system where the health services are delivered at the constraint of resources. A weekly rotation into the main departments enables one gain insight into the work of the healthcare professionals, and how their roles are interlinked to deliver care.

A trek into the country's most iconic buildings, vibrancy of life coupled with the various animal parks and recreational sites gives one unmeasurable adventure which completes your Elective Africa Day. A visit to the elephant orphanage and Giraffe center makes this destination Enriching.

Tanzania: Arusha Placements

Located at the foot of Africa's fifth tallest mountain; Mt Meru, is the town of Arusha known for its locals' vibrancy hospitality for foreigners and the large pool of adventure. This destination is well loaded with learning opportunities for health-care students.

Ngarenaro Health Center opens its gates for a unique rotation in its various departments. Those with an interest women health, reproductive health and maternal health find this location rich with shadowing experience.

Levolosi Health Center works closely with Ngarenaro in delivery of care, an internship experience here enables one to fully understand how primary healthcare is delivered, to meet the needs of the populations.

Kaloleni Health Center operates and mainly handles the outpatient cases tropical disease prevention campaigns, as well as rural health-care delivery. This destination is heavily laden with off hospital activities including visit to national parks as well as local area excursions. Education with fun and impact awaits you here

Our Destinations

Coastal Kenya Placements

Malindi destination stands out as part of the coastal land which captivates with its fascinating culture, striking architecture and the vibrant Swahili culture.

Malindi Sub-district Hospital is as well activity laden with cases that are absent in the developed world

Coastal Kenya Placements

Sun sand and ocean define the Kenyan coast as a destination for travel and adventure, but it is the presence of the second largest hospital in Kenya that makes it a distinct placement location.

Coast Provincial General Hospital Serves patient population of around three million people has an inpatient bed capacity of 700 and is rich in specialties within the medical field. Shadowing in this hospital is enriching and utterly rewarding. The ward rounds, the CMEs as well as the specialist's presentations to students not forgetting the broad range observational learning opportunities makes it stand out as the ideal destination to launch your healthcare profession.

For those with mental health interest **Port Reitz Hospital** in Mombasa Kenya is an ideal destination to further supplement your experience we are in partnership with **Bomu Hospital** which is a private hospital it helps one to clearly be able to draw a line between public and private healthcare delivery as well as the influence of income on health seeking behavior.

Tanzania: Moshi Placements

Besides the elegant beauty of the town that lies at the foot of Mt Kilimanjaro, Moshi Tanzania is endowed with a distinct culture, which anyone one wants to be immersed into. Our Hospital of partnership here;

Mawenzi Regional Hospital serves a population of approximately 1.7 million people. It has elaborate departments such as medical wards, surgical wards, a pediatric ward, a physiotherapy unit, a gynecological and prenatal ward, which includes a labor ward, a HIV-unit, tuberculosis clinic, X-ray unit and a laboratory. Mentorship in this departments on a rotational basis with one's interest is rewarding and educative it gives one a panoramic view of what the healthcare field and profession entails.

Our Program package :

1. Hospital fees for each student payable to the placement hospital and CTA stamp for Tanzania.
2. Personalized elective placement with supervision fees paid to mentors assigned at the hospital.
3. Large & secure shared accommodation & with meals.
4. Internet connectivity is available at the residence and weekly laundry services.
5. Airport transfers.
6. Daily morning group one-way trip to the placement hospital
7. Incountry support including our head office teams in your placement locations.
8. Detailed pre-departure support

Planning Your Program

Trip Planner (MyElective)

Planning an elective/internship experience abroad can be one of the hardest things. We provide support from the moment you sign up to the moment you arrive for your placement.

Upon signing up you will have access to our MyElective account, our online portal provides you with detailed information of your residence, the support staff, hospital placements, and mentors.

Our head office staff comes in handy to make sure you are well prepared and are only a call/email away for any enquiries you may have regarding your placement.

Visas, Flights & Insurance

As with any other type of travel, a placement abroad calls for necessary precautions. Students are required to make ample arrangements with regards to comprehensive travel insurance to cover health and personal belongings for the duration of your placement.

Our operations team will be at hand to advise you as you arrange for your flights, insurance and visa

Fundraise your travel

Travelling abroad can be a costly affair when you factor in the program fees, air tickets, travel insurance and so many other travel related costs.

The EA Fundraiser Tool offers a unique solution to raising these funds as you plan to discover a meaningful travel experience with us. Through the tool you are able to create your own campaign profile, share and publicise to attract as much audience to aid in your fundraising.

Your quest in raising funds is not just limited to our fundraiser tool, other options open for exploration include;

- Undertaking sporting events such as cycling, sponsored walks and hikes
- Cake sales at work, school and fairs
- Organising a talent show/fashion show
- Hosting themed dinner parties & baby sitting

All Prices are in USD

Reservation Deposit USD350

Destination	Duration	Amount
Nairobi, Kenya Safari Extra at \$628 \$450 for every extra week extended. \$80 for additional day extended.	2 Weeks 3 Weeks 4 Weeks 5 Weeks 6 Weeks	\$2,450 \$2,900 \$3,350 \$3,800 \$4,250
Mombasa, Kenya Safari Extra at \$628 \$400 for every extra week extended. \$80 for additional day extended.	2 Weeks 3 Weeks 4 Weeks 5 Weeks 6 Weeks	\$2,400 \$2,850 \$3,300 \$3,750 \$4,200
Kisumu, Kenya Safari Extra at \$628 \$400 for every extra week extended. \$80 for additional day extended.	2 Weeks 3 Weeks 4 Weeks 5 Weeks 6 Weeks	\$2,250 \$2,650 \$3,050 \$3,450 \$3,850
Arusha, Tanzania Safari Extra at \$785 \$500 for every extra week extended. \$80 for additional day extended.	2 Weeks 3 Weeks 4 Weeks 5 Weeks 6 Weeks	\$2,350 \$2,850 \$3,350 \$3,850 \$4,350
Migori, Kenya Safari Extra at \$628 \$400 for every extra week extended. \$80 for additional day extended.	2 Weeks 3 Weeks 4 Weeks 5 Weeks 6 Weeks	\$2,250 \$2,650 \$3,050 \$3,450 \$3,850

Adventure Treks

3 Days 2 Nights Mara, Kenya Safari
3 Days 2 Nights Serengeti, Tanzania Safari
Kilimanjaro Climb

Via a wire transfer to our TD Bank in the US with the following details:

Account Name: Elective Africa, LLC

Account Number: 435-5667804

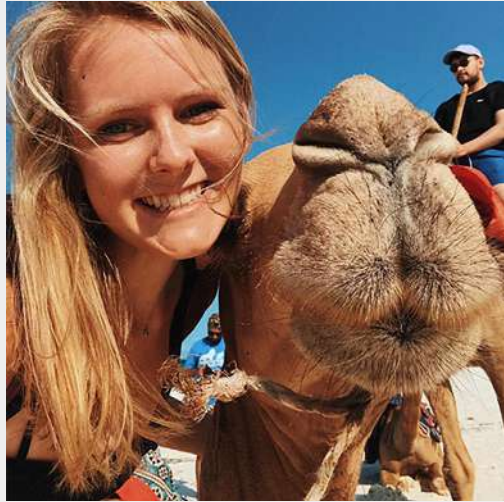
Routing / Fedwire / ABA #: 054001725

Elective Africa Address: 1775 Eye Street
Washington DC 20006

Via credit or debit card payment
through our PayPal account:



Medical Electives in Africa



Testimonials

Akram Mandourah, Royal College of Surgeons in Ireland **Unforgettable Experience in Mombasa Kenya**

The time I had in Mombasa was amazing. Elective Africa is an excellent program participate in. The people who work for EA are very professional and made sure to make my stay was cozy.


The accommodation was much better than I had expected. They made sure to keep our place clean, feed us well and tend to your needs. Carol was especially helpful in everything I needed. She was always available to assist me in anything no matter what time in the day and she always made sure everything was okay. The hospital I was, CPGH was great and the doctors were terrific. The doctors that stood out for me the most were Dr. Mansour, Dr. Naitham and Dr. Noor. These three doctors were amazing to work with and taught me so much. All in all my experience here was unforgettable and I definitely plan to come back.

Amy Owen, UNT Health Science Center Texas College of Osteopathic Medicine in United States **A Great Enrichment to My Education**

I had a lovely experience during my four weeks in Arusha with Elective Africa. Mount Meru Hospital was a great learning experience with a wide range of pathology. The nurses and doctors I encountered were so friendly and welcoming and they went out of their way to ensure I got many hands on experience. There was great support on the ground - our coordinators was always available when issues came up. He also helped us get involved in the local community - I so enjoyed the weekend hikes, coffee tours he suggested. Overall, this was a great enrichment to my education and I highly recommend it to anyone.

Sarah Kennedy, University of North Texas Health Science Center - Texas College of Osteopathic Medicine in United States **A Perfect Ending to Medical School**

I The 4 weeks I spent working at Mt. Meru Regional Hospital in Arusha, Tanzania were some of the most memorable of my life entire medical school journey. Arusha is a wonderful place to call home for one month and the staff at Mt. Meru was so warm and welcoming towards us as medical students. Given that the hospital is regional referral center, there is a large volume of patients and the variety of unique pathology that provided a wonderful learning opportunity to all kinds of students.



I am so grateful for this wonderful opportunity provided by Elective Africa and I leave Arusha with a new appreciation for Tanzanian culture and all of all the new friends I made along the way. These could not have been a perfect ending to medical school.

Sukarnan Thevalingam, Monash University in Australia

A Successful Placement Abroad

My name is Sukarnan (Suki) a junior doctor from Australia and I have completed a 2-week Dermatology placement at Coast Provincial General Hospital in Mombasa, Kenya. I have always dreamt of completing a medical placement in Africa and Elective Africa were instrumental in making this happen. From start Elective Africa were prompt, organized and communicated well which were all important in facilitating a successful placement in a place like Africa. I was able to appreciate the culture, language and environment. There was plenty of opportunity to explore the city life, beaches, learn Swahili, visit an orphanage/wildlife parks, organize day trips and met new people. Benson, Justina and Ann have been kind, approachable members from Elective Africa supported me on a daily basis, making sure I was enjoying my placement and were happy to tailor the experience to my interest. I cannot thank Elective Africa enough and highly recommend them.

Tanner Schrank, Jagiellonian University Medical College in Poland

An Eye-Opening Experience

For my final year of medical school, I have been doing clinical rotations in countries around the world. Most of them I had to set up myself but for Kenya I used Elective Africa. They provided a hospital placement for both of my 2-week rotations along with shared housing for me and my wife, a chef providing meals every day, a cleaning and laundry service and all the assistance we could ask for. My time in the labor ward and the casualty ward has been eye opening: the level of healthcare given at such a large hospital combined with the amount of improvising makes me re-evaluate how things are done back home. Elective Africa has done an excellent job of making sure we are treated well and taken care of. Their staff are always ready to help with anything so I highly recommend them and their programs.

Chidinma Oguejiofor, Knox College in United States

A Wonderful Program

To my surprise exceeded my expectation. I enjoyed working in the hospital and meeting the Doctors and Nurses who were nice and willing to explain ...

[Read More Testimonials Here ...](#)

To find out more kindly contact us:

Kenya Office:

6th Floor, The Chancery,
Valley Road, Nairobi, Kenya.
P.O. Box 100158-00101,
www.electiveafrica.com

US Office:

Suite 1150, 1775 Eye Street NW
Washington DC 20006, USA.
Tel: +1(609) 375 8912
info@electiveafrica.com

[Click to Visit Website](http://www.electiveafrica.com)

[Contact Us Here !](#)

