



Dentistry Electives in Kenya & Tanzania

Redifining Educational Travel



Table of Contents

Introduction

Key Program Highlights	4
Enrich Your Dental Career	5

Why Choose Elective Africa program

Summary of the Program Schedule	7
Basic Placement Requirements	8
Summary of 24Hours with Elective Africa	9

Program Aspects

Aspects of the Program	11
Destination Focus	15

Our Destinations

Destinations	16
Our Program Package	18
Planning Your Program	19

Program Prices & Testimonials

Program Prices	20
Pictorial	21
Featured Testimonials	22
Contact Us	24

Our Mission

To be the
best travel
abroad
placement
provider in
Africa;
Redefining
Education-
Travel



Introduction

Elective Africa is a leading organizer of dentistry electives and volunteer/outreach placements in Africa. We have been working for over 10 years with teaching hospitals, rural hospitals and community health centers in Africa to provide current and aspiring dentistry and healthcare students a rare opportunity for a hands-on learning experience, cultural exchange, and medical volunteering in Africa.

Our dental elective placements are uniquely tailored to ensure that you take part in dental care activities such as basic dental care including gum treatment for bleeding and swollen gums, restorative dentistry (permanent filling in decayed teeth), the extraction of erupted teeth and the removal of fractured roots, management of traumatic injuries of the teeth and the soft tissues of the mouth, orthodontic treatment, root canal treatment, replacement of missing teeth by removable dentures among others.

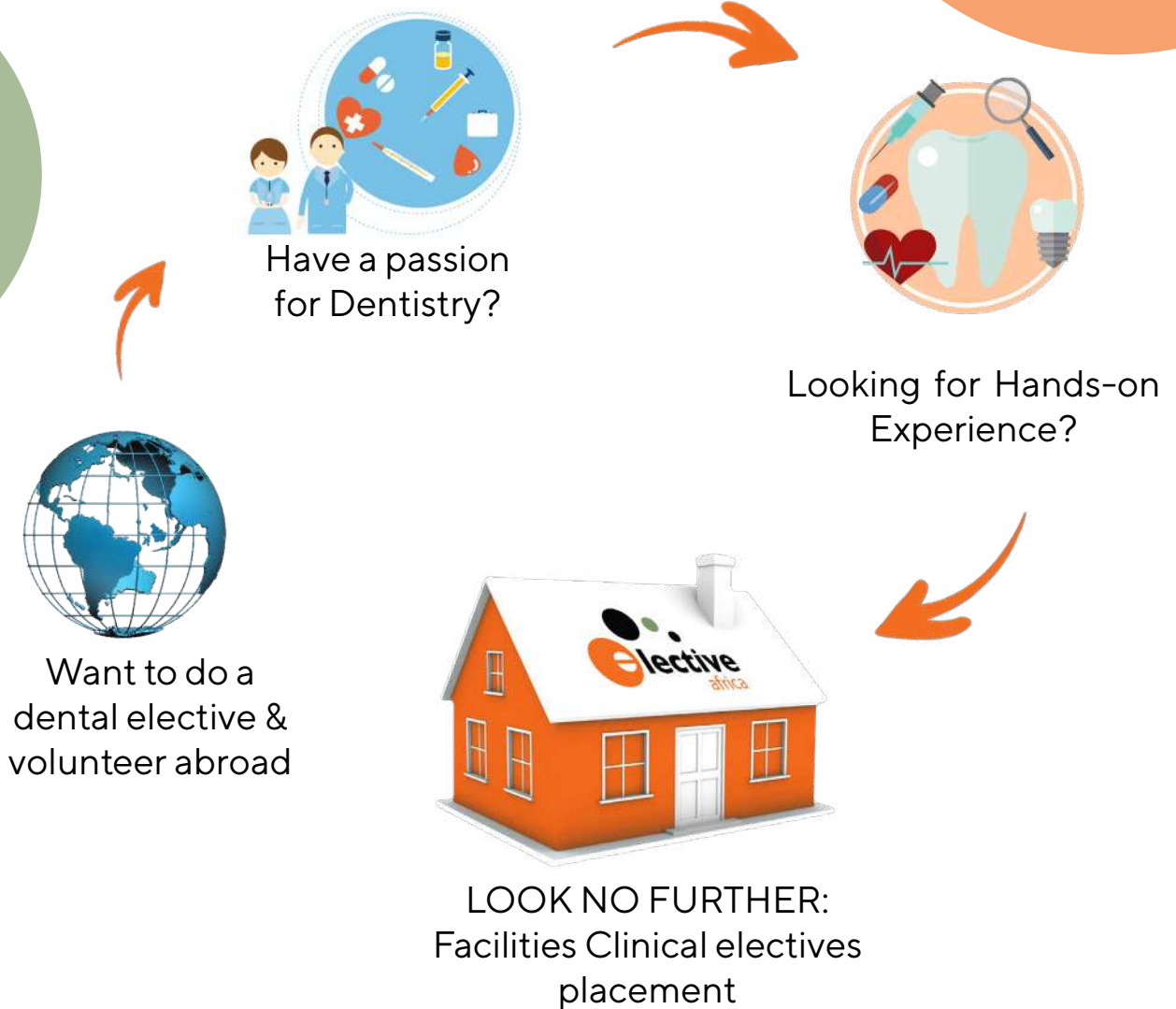
While these activities look more or less what one may have been exposed to their diagnosis as well as their treatment methods differ. Through this dental elective attachment you will get to learn how innovation and creativity are applied to deliver dental care with limited resources. Besides the routine dental clinic rotations you will also take part in dental education to sensitise the populations on the need for seeking dental preventive services.

Key Program Highlights

- 1.** A supervised, structured and safe dentistry elective program abroad.
- 2.** Program is designed in an established network of teaching hospitals and monitored by consultant doctors and registered nurses. We encourage clinical directors and student co-coordinators to work with us to customize an elective experience that meets unique institutional requirements.
- 3.** We evaluate our participants during and at the end of the program (please see our information booklet for our evaluation form) to ensure that program objectives are met.
- 4.** Opportunity for hands-on experience is unmatched; depending on level of study and clinical exposure, our participants get extensive hands-on experience in a supervised setting.
- 5.** Get involved in addressing conditions in more advanced stages, rarely seen in the developed world.
- 6.** We have strong relationships with hospitals in which we place our students and the dentists that they work with, ensuring a very productive experience.
- 7.** The students acquire an invaluable opportunity to work in a low resource setting which supports character development and benefits local communities, especially those with limited access to dental care.



Enrich your Dental Career with Elective Africa



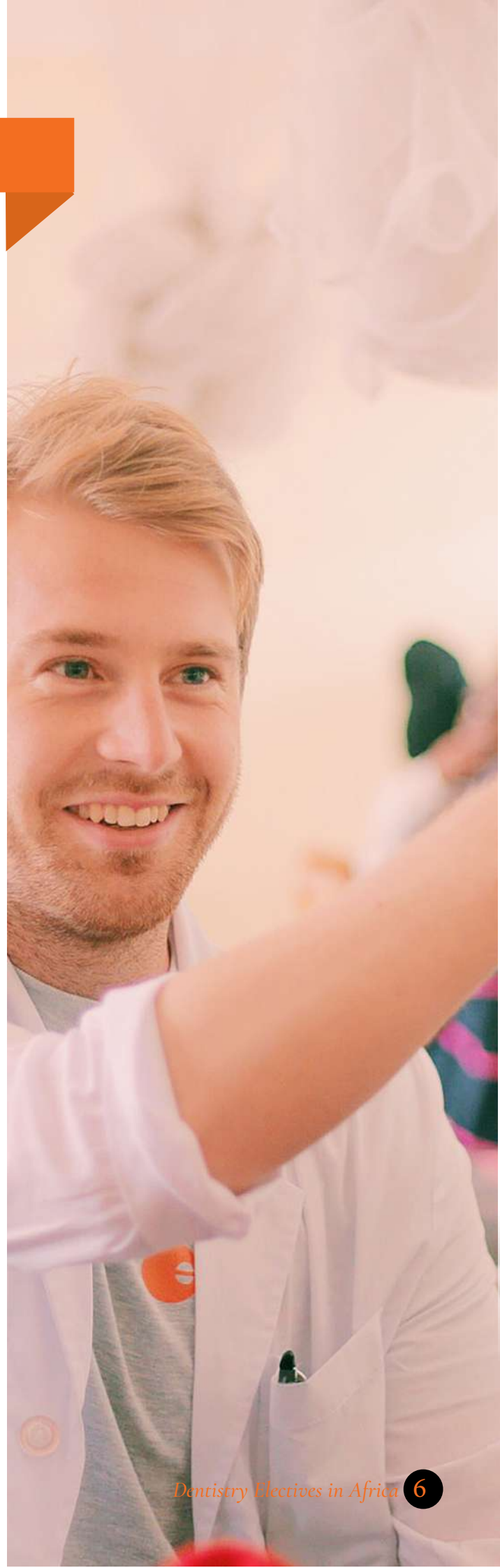
Those taking part in dental outreach volunteering will participate in management of dental caries and periodontal disease in primary school children during outreach programs. In addition to hospital volunteering, participants also participate in several community projects.

The program is well structured, supervised, and is delivered by qualified dentists. Participants are evaluated at the end of the program and those who have met program requirements receive a certificate of completion. We also complete required forms and documentation for any students seeking elective credit.

Why Choose Our Program

The program is unique because it enhances clinical skills and allows participants to gain hands on experience in a way that is rarely available in developed countries. Working with qualified dentists, students participate in the following:

1. History taking and examination.
2. General dental care, routine cleaning and checkups scaling, intra oral radiographs.
3. Permanent and general fillings.
4. Treatment of gum diseases.
5. Bridges, dental veneers and crowns.
6. Tooth extractions.
7. Bridges, dental veneers and crowns.
8. Treatment of gum diseases.
9. Incision and drainage.
10. Maxillofacial procedures.
11. Root canal treatment.
12. Composition restoration and
13. Case management.



Timing	Activities
Day 1 & 2	<p>Arrival: Picked up at the airport by our representative and taken to student residence – accommodation is basic, shared rooms, but comfortable.</p> <ul style="list-style-type: none"> • Residence orientation, including introduction to staff that will be taking care of you during your stay. • Local orientation on surroundings – where to shop, groceries, access internet, transportation, communication, etc • Program rules and regulations.
Day 3	<p>Program content introduction</p> <ol style="list-style-type: none"> 1. Orientation speaker. 2. Overview and discussion of healthcare system in Kenya. 3. Introduction to your program professional mentors. 4. Introduction visit to the hospital and meeting staff you will be working with.
Next two & half weeks (days 4 through 21)	<ul style="list-style-type: none"> • Shadowing dentists. • Hands on experience – depending on skill set – in dental department. • Students get involved in: History taking and examination, Case management, General dental care & routine cleaning and check ups, Scaling intra oral radiographs, Permanent and general fillings, Composite restorations, Tooth extractions, Treatment of gum diseases, Incision and drainage, Canal treatment, Bridges/dental veneers and crowns, Maxillofacial procedures. • Feedback and assessment from dentist mentors. • Time may be split between community health centers (for basic procedures) and more advanced facilities such as district or provincial hospitals (for complicated procedures)
2 day community service	<p>Participate in select community service projects. Projects are always ongoing and participants can participate during their free time.</p>
4 day trip	<ul style="list-style-type: none"> • Optional trip to the Masai Mara, including a stop to a Masai Village.
Last 2 days	<ul style="list-style-type: none"> • Debrief sessions, evaluation, and review.
Day 30	<ul style="list-style-type: none"> • Departure. Picked up at the student resident by one of our representatives and taken to your departure point.



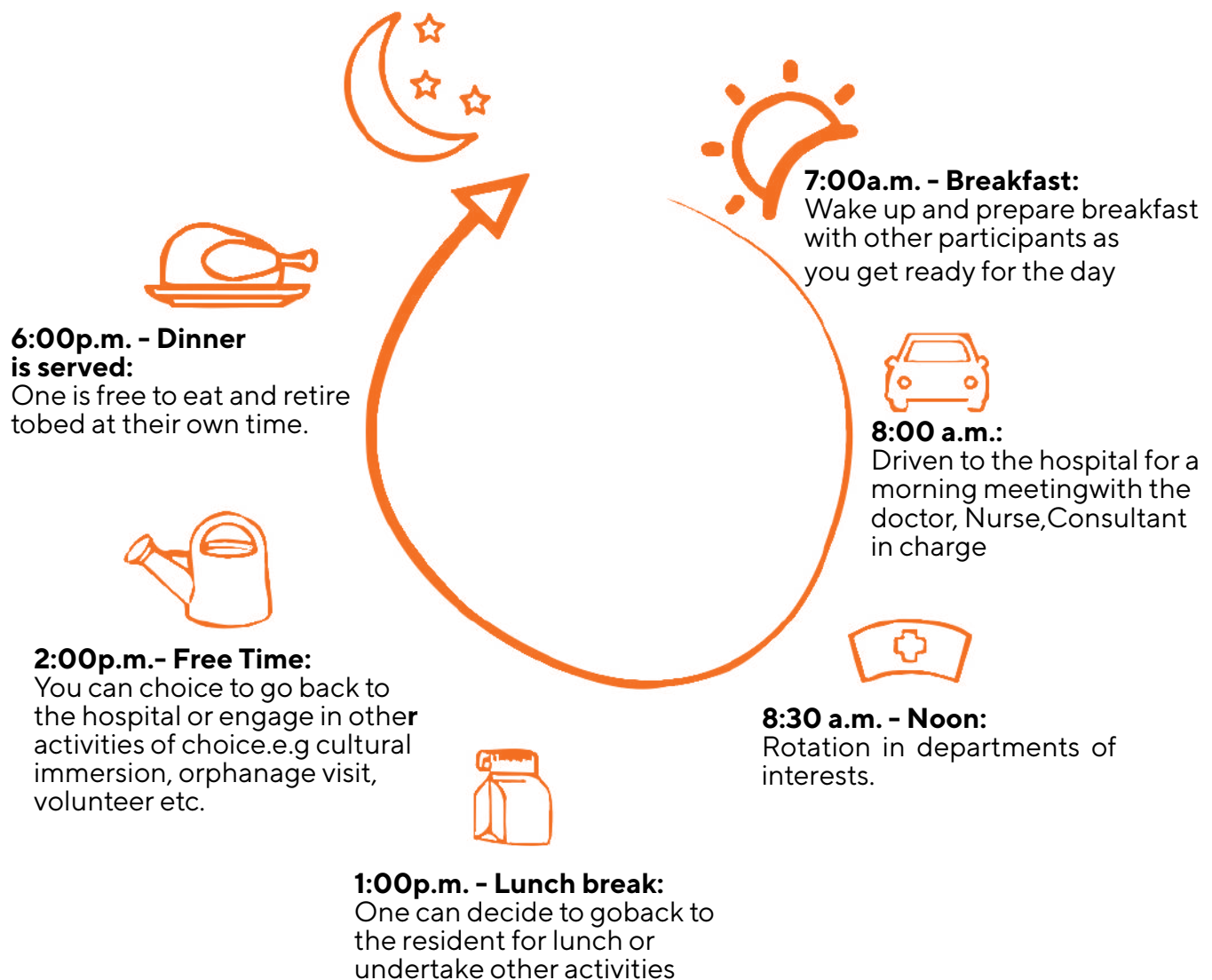
Exact timing for the community project and the safari components of the program may change depending on the logistical needs of each participating group

Basic Placement Requirements

1. Must be at least 18 years of age.
2. Full payment of program fee 3 (three) months prior to starting the program.
3. A non-refundable deposit of \$350 that is deductible from the total program fee.
4. Duly completed online application form.
5. A signed letter on a letter head from the school/ institution showing they are bona fide students at that institution.
6. For medical camps Doctors must show proof of medical qualification e.g. certificates of qualification or copies of practitioners' license.
7. Students must show evidence of enrollment in a dental or medical school etc.



24 Hours with Elective Africa



Planning an individualized & structured healthcare elective requires a significant level of preparation. The non-refundable reservation deposit allows us to process your paperwork, plan for your mentorship, book your accommodation and to create your "MyElective" account. The fee also guarantees a spot for you in the program. Prices below are in addition to the reservation deposit

How To Apply

To apply you must;


- Be at least 18 years old
- Complete an application at <http://www.electiveafrica.com/apply>
- Provide evidence of enrollment in a university program usually a signed letter from your institution showing that you are a bona fide student in good standing.
- Pay the reservation deposit.

#ElectiveAfrica

Follow Us for favourite stories from Abroad

 info@electiveafrica.com

 +1 609 375 8912

 +254 (731) 014 379

 [Elective Africa](#)

 [Elective Africa](#)

 [@ElectiveAfrica](#)

 [@Elective_Africa](#)

 [Elective Africa](#)

Aspects of the Program

We have clearly laid our partnership with hospitals that ensure that besides having an opportunity have a mentor. You will observe various clinical activities and have questions to ask; the mentor's role is to explain these activities in a manner that you can understand.

The mentor also gives you the real picture of what is entailed in the delivery of care in your area of interest and this way you learn the best practice to succeeding in the profession. With the hospital time you will also have the opportunity to participate in continuous medical education sessions, which may come in form of presentations by the personnel in the hospital.

This participation enables students to understand the basic tips on patient care; they also get to understand tips on researching on recent medical developments. The daily ward presentations and case analysis at the hospital setting are not only educational forums but a team working session which clearly teaches the students the need for team work in care delivery and interpersonal skills in healthcare delivery.

Quality Healthcare Internships

Elective Africa incorporates guidelines laid out by universities and schools to ensure that internship placements are structured according to a student's program objectives, level of clinical skills and the individual's specific interest.

Part of the university recommendations are that one is exposed to the health system and observe what the professional does on a day to day basis thus developing and determining whether that career is their best fit. We are keen to follow the guidelines on clinical training.

The students are not involved in any activity that requires prior technical know-how; Students are able to understand through the interaction with other healthcare personnel how care is delivered and in a team context and what the roles of some major players are. Given that head office teams are on ground, we are able to continuously evaluate & monitor the hospital placement structures to ensure that they have the capacity to offer quality learning opportunity for the students.



Unique Health System

Our destinations of placements have health systems that are characterized by, unique health conditions such as tropical diseases, shortage of specialized medical equipment and inadequate staff for the delivery of comprehensive care.

A mentorship experience in this system thus allows one to learn the strain associated with management of conditions that may not be present at their home countries. The shortage of staff and resources prompts the doctors to be innovative in order to deliver the much needed health services with the limit of resources, an internship with us is therefore a first real interaction between an aspiring healthcare professional and innovation to deliver care.

These partner hospitals are rewarded for their commitment to our programs; every student fee carries a hospital fee that is paid to the hospital of placement. In addition we reward the healthcare professionals with a mentorship fee too. We also conduct special CSR projects with hospitals as a way of giving back.

Our students have also found it very rewarding raising donations in support of the health system especially with the visible resource constrains.

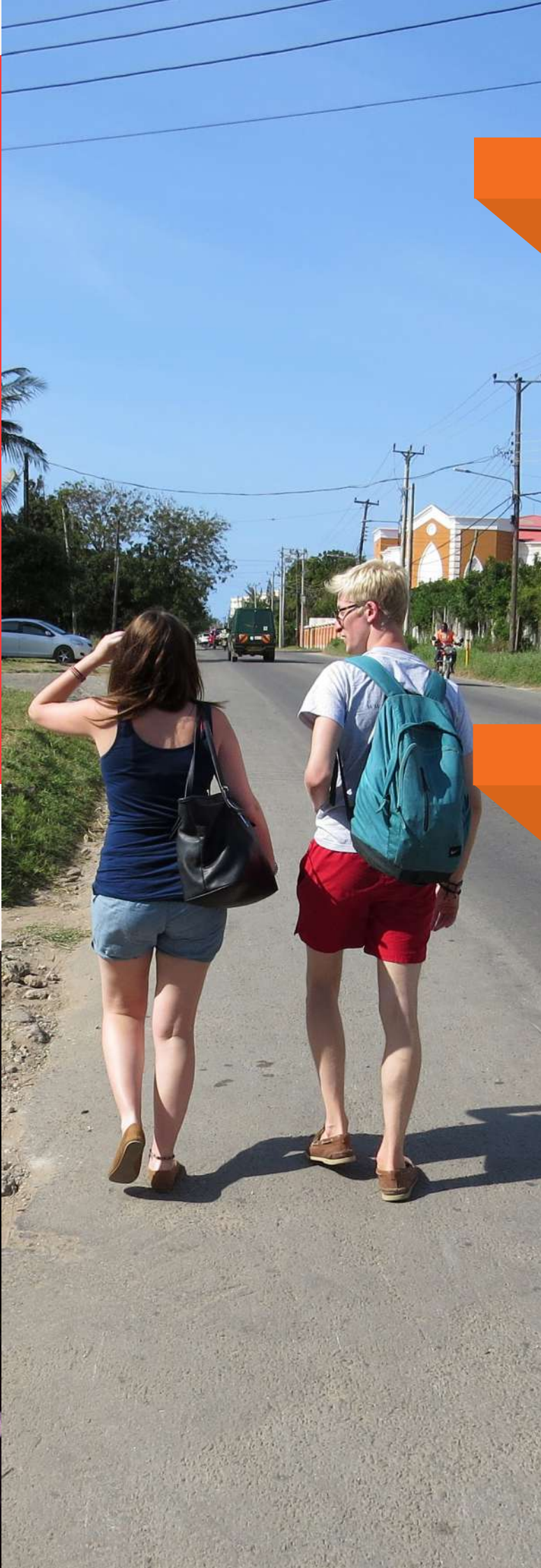
Global Health Tutorials

Every week our participants come together at the residential house where they take part in global health tutorials coordinated by our local health experts. These sessions address various ethical issues and dilemmas facing professionals in the host country.

These sessions also present the students to raise questions on some of the observations they have made as well as the clear difference they have observed.

These sessions add up to the discussion among the students with similar interests and from different locations. Through these discussions the students are able to understand how culture influences delivery





Health & Safety

Our goal is to ensure each student is safe and secure in their placement abroad. Our placement destinations are well selected in zones where the locals are friendly to the foreigners and welcoming to all people. We keep abreast of all security developments and provide necessary information in a timely manner. From the moment you land, our staff will be on hand to provide on-program support. Whether at the hospital or out about town, we are just a call away. We are very keen to advise our students on the measures to take to ensure their safety and that of their belongings.

Daily Shadowing Journal

Our programs requires participants to keep a daily log of their hospital activities. Keeping a journal of your hospital experience will help you maximize on what you learnt by putting your thoughts to words and serve as a reference during your admissions process. This also helps the students document their daily experiences as well as the key skills learnt while on placement. The journal acts as a monitoring aid to the coordinators on the experiences of the students and assists to correct any deficiencies in the desired experiences.

At the end of the program we issue a review form to evaluate the student's activities and learning as a summation of the daily logs.



College Credit

We encourage our program participants to work with their college advisors and program sponsors to seek college credit for the program.

To receive a certificate of completion, participants complete at least 50-60 hours. Students who wish to seek the college credits are also encouraged to bring an evaluation form from their school which is filled by the doctors and mentors at the site of placement.



DESTINATIONS FOCUS

Discover how small a world you occupy, see the world with new lens.

Discover destinations. Discover people.

Rural Kenya Placements

This destination presents unique chances to experience the rural setting as one gets a rare chance to be mentored and supervised in **Migori County Referral Hospital**. In this hospital one has the chance to encounter the treatment of infectious diseases such as Malaria as well as be able to see the diagnosis, prognosis and treatment of advanced medical conditions.

Out of the hospital, the volunteer and impactful activities are in plenty ranging from visits to children's homes, community engagement for health promotions are among those rewarding activities which one can be involved in. With a slow pace life here unfolds and in silence your passion to health-care profession is rejuvenated and fueled.

Health practitioners in rural setting of Migori speak out to one voice, one calling that of passion. It is common to hear them tell the participants "In a cold world and an icy profession there's is love and compassion in caring

Urban Kenya Placements

Nairobi, Kenya is a highlight of an urban location of the developing world. This destination presents a unique opportunity for mentorship at **Mbagathi District Hospital**. The ready-made elective at this location allows one to be immersed into unique health system where the health services are delivered at the constraint of resources. A weekly rotation into the main departments enables one gain insight into the work of the healthcare professionals, and how their roles are interlinked to deliver care.

A trek into the country's most iconic buildings, vibrancy of life coupled with the various animal parks and recreational sites gives one unmeasurable adventure which completes your Elective Africa Day. A visit to the elephant orphanage and Giraffe center makes this destination Enriching.

Tanzania: Arusha Placements

Located at the foot of Africa's fifth tallest mountain; Mt Meru, is the town of Arusha known for its locals' vibrancy hospitality for foreigners and the large pool of adventure. This destination is well loaded with learning opportunities for health-care students.

Ngarenaro Health Center opens its gates for a unique rotation in its various departments. Those with an interest women health, reproductive health and maternal health find this location rich with shadowing experience.

Levolosi Health Center works closely with Ngarenaro in delivery of care, an internship experience here enables one to fully understand how primary healthcare is delivered, to meet the needs of the populations.

Kaloleni Health Center operates and mainly handles the outpatient cases tropical disease prevention campaigns, as well as rural health-care delivery. This destination is heavily laden with off hospital activities including visit to national parks as well as local area excursions. Education with fun and impact awaits you here

Our Destinations

Coastal Kenya Placements

Malindi destination stands out as part of the coastal land which captivates with its fascinating culture, striking architecture and the vibrant Swahili culture.

Malindi Sub-district Hospital is as well activity laden with cases that are absent in the developed world

Coastal Kenya Placements

Sun sand and ocean define the Kenyan coast as a destination for travel and adventure, but it is the presence of the second largest hospital in Kenya that makes it a distinct placement location.

Coast Provincial General Hospital Serves patient population of around three million people has an inpatient bed capacity of 700 and is rich in specialties within the medical field. Shadowing in this hospital is enriching and utterly rewarding. The ward rounds, the CMEs as well as the specialist's presentations to students not forgetting the broad range observational learning opportunities makes it stand out as the ideal destination to launch your healthcare profession.

For those with mental health interest **Port Reitz Hospital** in Mombasa Kenya is an ideal destination to further supplement your experience we are in partnership with **Bomu Hospital** which is a private hospital it helps one to clearly be able to draw a line between public and private healthcare delivery as well as the influence of income on health seeking behavior.

Tanzania: Moshi Placements

Besides the elegant beauty of the town that lies at the foot of Mt Kilimanjaro, Moshi Tanzania is endowed with a distinct culture, which anyone one wants to be immersed into. Our Hospital of partnership here;

Mawenzi Regional Hospital serves a population of approximately 1.7 million people. It has elaborate departments such as medical wards, surgical wards, a pediatric ward, a physiotherapy unit, a gynecological and prenatal ward, which includes a labor ward, a HIV-unit, tuberculosis clinic, X-ray unit and a laboratory. Mentorship in this departments on a rotational basis with one's interest is rewarding and educative it gives one a panoramic view of what the healthcare field and profession entails.

Our Program package :

1. Hospital fees for each student payable to the placement hospital and CTA stamp for Tanzania.
2. Personalized elective placement with supervision fees paid to mentors assigned at the hospital.
3. Large & secure shared accommodation & with meals.
4. Internet connectivity is available at the residence and weekly laundry services.
5. Airport transfers.
6. Daily morning group one-way trip to the placement hospital
7. Incountry support including our head office teams in your placement locations.
8. Detailed pre-departure support

Planning Your Program

Trip Planner (MyElective)

Planning an elective/internship experience abroad can be one of the hardest things. We provide support from the moment you sign up to the moment you arrive for your placement.

Upon signing up you will have access to our MyElective account, our online portal provides you with detailed information of your residence, the support staff, hospital placements, and mentors.

Our head office staff comes in handy to make sure you are well prepared and are only a call/email away for any enquiries you may have regarding your placement.

Visas, Flights & Insurance

As with any other type of travel, a placement abroad calls for necessary precautions. Students are required to make ample arrangements with regards to comprehensive travel insurance to cover health and personal belongings for the duration of your placement.

Our operations team will be at hand to advise you as you arrange for your flights, insurance and visa

Fundraise your travel

Travelling abroad can be a costly affair when you factor in the program fees, air tickets, travel insurance and so many other travel related costs.

The EA Fundraiser Tool offers a unique solution to raising these funds as you plan to discover a meaningful travel experience with us. Through the tool you are able to create your own campaign profile, share and publicise to attract as much audience to aid in your fundraising.

Your quest in raising funds is not just limited to our fundraiser tool, other options open for exploration include;

- Undertaking sporting events such as cycling, sponsored walks and hikes
- Cake sales at work, school and fairs
- Organising a talent show/fashion show
- Hosting themed dinner parties & baby sitting

All Prices are in USD

Reservation Deposit USD350

Destination	Duration	Amount
Nairobi, Kenya Safari Extra at \$628 \$450 for every extra week extended. \$80 for additional day extended.	2 Weeks	\$2,450
	3 Weeks	\$2,900
	4 Weeks	\$3,350
	5 Weeks	\$3,800
	6 Weeks	\$4,250
	6 Weeks	\$4,250
Mombasa, Kenya Safari Extra at \$628 \$450 for every extra week extended. \$80 for additional day extended.	2 Weeks	\$2,400
	3 Weeks	\$2,850
	4 Weeks	\$3,300
	5 Weeks	\$3,750
	6 Weeks	\$4,200
	6 Weeks	\$4,200
Kisumu, Kenya Safari Extra at \$628 \$400 for every extra week extended. \$80 for additional day extended.	2 Weeks	\$2,250
	3 Weeks	\$2,650
	4 Weeks	\$3,050
	5 Weeks	\$3,450
	6 Weeks	\$3,850
	6 Weeks	\$3,850
Arusha, Tanzania Safari Extra at \$785 \$500 for every extra week extended. \$80 for additional day extended.	2 Weeks	\$2,350
	3 Weeks	\$2,850
	4 Weeks	\$3,350
	5 Weeks	\$3,850
	6 Weeks	\$4,350
	6 Weeks	\$4,350
Migori, Kenya Safari Extra at \$628 \$400 for every extra week extended. \$80 for additional day extended.	2 Weeks	\$2,250
	3 Weeks	\$2,650
	4 Weeks	\$3,050
	5 Weeks	\$3,450
	6 Weeks	\$3,850
	6 Weeks	\$3,850

Adventure Treks

3 Days 2 Nights Mara, Kenya Safari
 3 Days 2 Nights Serengeti, Tanzania Safari
 Kilimanjaro Climb

Via a wire transfer to our TD Bank in the US with the following details:

Account Name: Elective Africa, LLC
Account Number: 435-5667804
Routing / Fedwire / ABA #: 054001725
Elective Africa Address: 1775 Eye Street
 Washington DC 20006

Via credit or debit card payment through our PayPal account:



Dentistry Electives in Africa **20**



Testimonials

Chioma Okekpe - University of Pikeville-KY United States

Unforgettable Experience in Mombasa Kenya

My overall experience was truly amazing. I would recommend this program to anyone who interested in traveling abroad especially those individuals and students in health care. In the hospital you are allowed to do much more than that we are allowed in the states; we are allotted a good deal of autonomy and freedom to get hands on experience in almost every aspect and especially in the hospital. The hospital staff are very welcoming, enthusiastic about teaching and introducing you to those diseases and conditions we usually only read about.

Elective Africa does a good job of making you feel comfortable during your stay .We are picked up from the airport as well as provided rides to and from the hospital every day. The housing far exceeded my expectations; cleaned every day, linens changed weekly, cable and hot water.


The food was great; dinner was prepared fresh every night. The residence is in close proximity to a shopping complex with several restaurants, a movie theatre, grocery store, clothing stores, ATMs and frees Wi-Fi. Finally, if you have the chance you must take advantage of the opportunity to go on safari, travel into town, and if time permits (it didn't for me) visit Zanzibar.

Working with Elective Africa was probably one of best decisions I have made and one of the most rewarding experiences I have had.

Donal Berquist Jr - University of Michigan, United States

Amazing Experience!

At first I was a bit nervous, traveling to Africa for the first time and going by myself, knowing no one else in the program. However, when I arrived I immediately felt at home. The staff was extremely helpful; friends and the students on the program were all great people, who you felt you knew so well by the end of the program. Working at the hospital I got to experience many things I could not back home and was allowed to be a lot more hands-on. In the afternoons, teaching the Kids at the School, Playing games with them and teaching them to swim was so rewarding and fun. On the weekends, heading to the beach or going on Safari allowed me to experience the beauty of Africa and gave a vacation aspect to the program to go along with the educational experience of the hospital. Overall the experience was amazing and my only regret.



Aaron Bowyer - University of British Columbia, Canada

A Successful Placement Abroad

"As a pre dental student from Canada I had a very fun, interesting, informative and rewarding experience with Elective Africa. I was stationed at Port Reitz Hospital in Mombasa for just over two weeks the dentists in the dental department at Port Reitz went out of their way to make it a positive and worthwhile learning experience. I was able to acquire hands on experience from the injection and extraction procedures as well as learn and witness first-hand how scaling and the production of orthodontic appliances are carried out. All of the activities that were organized for us were amazing experiences such as visiting an orphanage, teaching school children how to swim, Haller Park, Night life, the beach and the safari. Overall Elective Africa was an amazing learning experience that I'll never forget.

Wesley Burcham - Indiana State University, United States

A Successful Placement Abroad

Elective Africa provided me a very unique experience of dentistry. The dentists at the hospital were more than happy to assist you and teach you new things. In my first week I was able to do an injection and extraction! Of course back home you would never be able to experience that until you were a dental student. The help at the house was really great too. I wouldn't worry about the food. It is actually better than what you could find back home. Of course there is time to travel and sight see, which I did most days and had many unforgettable experiences.

[Read More Testimonials Here ...](#)

To find out more kindly contact us:

Kenya Office:

6th Floor, The Chancery,
Valley Road, Nairobi, Kenya.
P.O. Box 100158-00101
www.electiveafrica.com

US Office:

Suite 1150, 1775 Eye Street NW
Washington DC 20006, USA
Tel: +1(609) 375 8912
info@electiveafrica.com

[Click to Visit Website](http://www.electiveafrica.com)

[Contact Us Here !](mailto:info@electiveafrica.com)

